

Introduction to Traffic Enforcement

Facilitator Guide

Session Overview

Introduction & Learning Objectives	05m
Discussion – Review the Three E's	05m
Discussion – Goals of Traffic Enforcement	05m
GROUP EXERCISE – Traffic Authority (5/15/15)	35m
Review	03m
ASSIGNMENT – Traffic Enforcement Violation Log	02m
End of Session / Break	05m

Total Session Time: 1 hour

Main Topics of Session:

- *Three E's of Traffic Enforcement*
- *Goals of Traffic Enforcement*
- *Enforcement Authority*
- *RCW: Failure to Obey*
- *RCW: Eluding*

Facilitators Needed: 1 (TR)

Location: Classroom

Materials Needed:

- *PowerPoint - Introduction to Traffic Enforcement*
- *ASSIGNMENT - Traffic Enforcement Violation Log*
- *FG Supp - ANSWER KEY - Traffic Take-home 68 Questions*

Students Should Already Have:

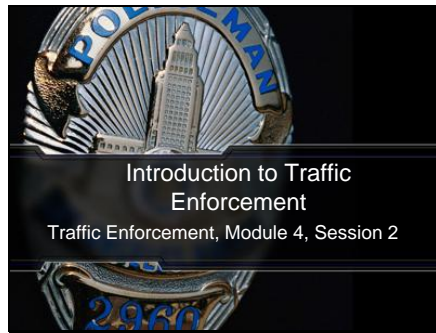
- *Pocket Press Books*
[THUMB DRIVE]
- *STUDY - Traffic Take-home 68 Questions*
- *HANDOUT - BLEA Example Bail Schedule*



Introduction to Traffic Enforcement

Facilitator Guide

Slide 1



SAY TO CLASS

The following sessions are designed to give you the knowledge and skills needed to provide quality responses to calls for service and events involving traffic enforcement. You will be taught how to recognize if a traffic offense has occurred, articulate the elements of the offense, and identify the section, subsection, paragraph or sub-paragraph of the RCW that applies; safely stop a vehicle and write citations; ascertain if someone is under the influence of drugs and/or alcohol; to operate the BAC DataMaster; search and impound vehicles; and recognize and investigate drug abuse.

Life throughout this state is heavily dependent upon the free movement of people and vehicles. A major share of the responsibility toward achieving the degree of order for this free movement is assumed by the police.

- Learn to Recognize Traffic Violations
- Learn to Properly Stop a Violator Vehicle
- Learn to Complete the Citations
- Movement of People & Vehicles is Important

Slide 2

Learning Objectives

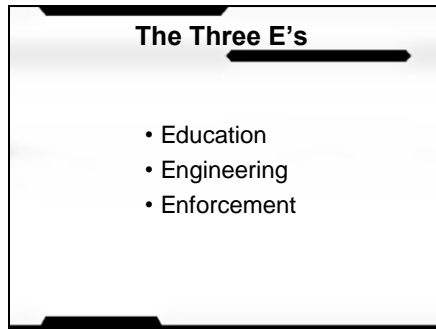
- Identify the "three E's" of traffic enforcement and how they impact meeting the goals of traffic enforcement
- Recognize the enforcement authority granted by specific RCWs and how each applies to the peace officer's role in traffic law enforcement
- Identify what constitutes failing to obey a police officer and eluding a police vehicle



Introduction to Traffic Enforcement

Facilitator Guide

Slide 3



DISCUSSION - Three E's of Traffic Enforcement

QTC: In your pre-course material, you were introduced to the three E's of traffic enforcement. What are the three E's? How do they reduce collisions, expedite traffic and assist the public?

AR: Education: Of the public - driver's safety, proper vehicle equipment and/or use, awareness of traffic laws.

Engineering: Contributing factors in collisions are determined by investigation, these factors can influence roadway design and traffic control; citizen complaints and input.

Enforcement: To motivate motorists to modify their driving behavior and to act as a deterrent.



SAY TO CLASS

Let's take a look at some scenarios related to traffic. In our first scenario, you have responded to the same location four times in the last two weeks for collisions. In each case, vehicles traveling along a rural road have been hit by drivers pulling out of a side road from a signed stop.

- Scenario #1:
Lots of Collisions
at Same Place

QTC: Which of the E's could be relevant to this problem? Give examples of how applying them could help solve this problem.

AR: Recruits response may include:

Engineering of intersection, sign placement, blocked view, speed limit inappropriate

Enforcement of laws in area (deterrence to violations)



Introduction to Traffic Enforcement

Facilitator Guide



SAY TO CLASS

In our second scenario, we have multiple complaints of DUIs in a particular area.

- Scenario #2:
DUI's in Particular Area

QTC: Which of the E's could be relevant to this problem? Give examples of how applying them could help solve this problem.

AR: Recruits response may include:

Heavier **enforcement** of laws in area (deterrence to violations)

Education of drink servers regarding over-service



SAY TO CLASS

In our third scenario, several small children in your beat have been struck and injured by vehicles while crossing the street near a popular park. You decide to check more often in that area and observe that more than half the cars are not stopping while children wait to cross

- Scenario #3:
Children Struck Near Park

QTC: Which of the E's could be relevant to this problem? Give examples of how applying them could help solve this problem?

AR: Recruits response may include:

Heavier **enforcement** (Special emphasis patrols on all or this crosswalk)

Education of parents and guardians about the proper ways to safely use crosswalks

Engineering thru placement of signs, visibility, speed calming devices



Introduction to Traffic Enforcement

Facilitator Guide

Slide 4

Goals of Traffic Enforcement

- Reduce collisions
- Expedite the flow of traffic
- Assist the motoring public



SAY TO CLASS

Traffic enforcement is not just about writing tickets. It is about solving problems. In each of these cases, some or all of the three E's would be useful in solving the problem. Application of these three tools can result in reducing the number of collisions/saving lives, expediting the flow of traffic, and assisting the motoring public.

In general, your actions, whether assisting a disabled vehicles, changing tires, giving directions, investigating an accident, or writing a citation - ultimately benefit the public.

- It's Not Just About Writing Tickets



DISCUSSION - Authority

QTC: What is authority?

AR: Authority is the power to influence or command thought, opinion or behavior.

QTC: Where does your authority for traffic enforcement come from?

AR: Your traffic enforcement authority comes from RCW, Title 46, Chapter 61.



Introduction to Traffic Enforcement

Facilitator Guide

Slide 5

Group Exercise: *Authority*

- **Answer these questions:**
 - What rights and authority do these RCWs give you as peace officers?
 - How does this authority apply to your role in traffic enforcement?
 - Are there responsibilities that come with these?
- **Be prepared to present in 15 minutes**



GROUP EXERCISE - Traffic Authority

Time: **35 min** (5 prep / 15 work / 15 presentation)

- Materials:
- Easel
 - RCW's
 - Pocket Press Books

NTF: Divide the class into their learning teams. Write the following RCW numbers on the whiteboard or an easel:

- Group #1: RCW 46.61.015
- Group #2: RCW 46.61.020
- Group #3: RCW 46.61.021
- Group #4: RCW 46.61.022
- Group #5: RCW 46.61.024

- Instructions: Your group has 15 minutes to research your assigned RCW and answer the following three questions about it:
- What rights and authority do these RCWs give you as peace officers?
 - How does this authority apply to your role in traffic enforcement?
 - Are there responsibilities that come with these?

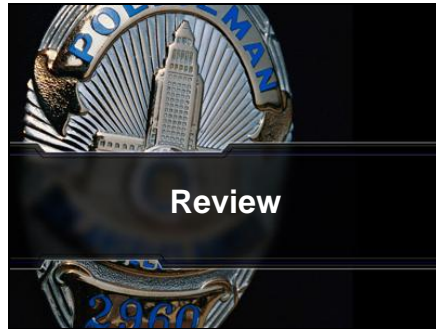
Have a spokesperson from your group ready to do a 3-minute presentation on your findings.



Introduction to Traffic Enforcement

Facilitator Guide

Slide 6



NOTE TO FACILITATOR

Quickly recap the following:

- Three E's
- Goals of Traffic Enforcement
- Authority
- RCW: Failure to Obey
- RCW: Eluding



ASGN

HOMEWORK-ASSIGNMENT - ASSIGNMENT- Traffic Enforcement Violation Log

Due: **Due at end of Module** (“Pre-Exam Review” session - see schedule)

Instructions: This log is an individual assignment. During your off-hours, you will observe and log 20 separate traffic infractions. This log is due at the end of this module.



STUDY

STUDY MATERIAL - STUDY - Traffic Take-home 68 Questions

Recommended Completion: **End of Module** (“Pre-Exam Review” session - see schedule)

Instructions: This self-study guide has been provided for your benefit. You are not required to complete it, but it is strongly recommended. You will be tested on the RCW's covered within this guide. The answers will be provided during the “Pre-Exam Review” session at the end of this module.



BREAK/END OF SESSION

