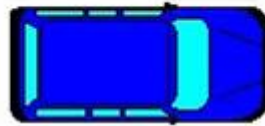
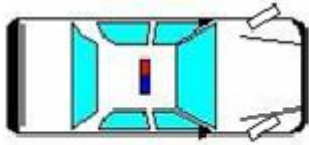
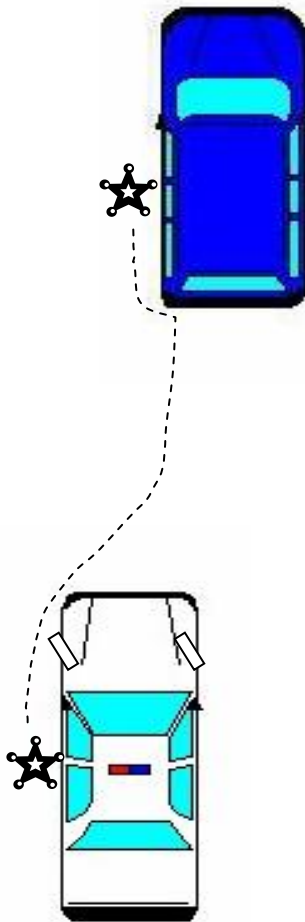


## POSITION 1 – OFFSET

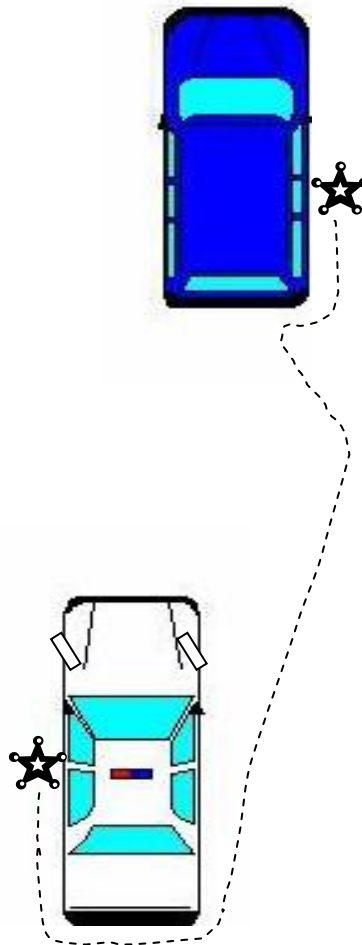
Vehicle positions and distance provide safety zone for the officer during contact with violator. The offset position is the preferred vehicle position for a two-officer unit.



### Standard Approach

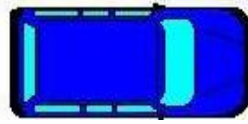
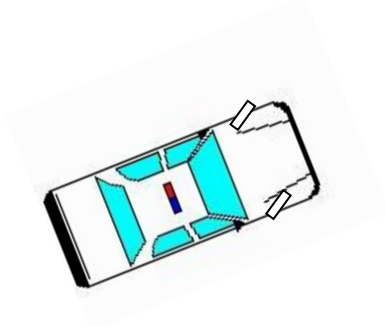


### Crossover Approach



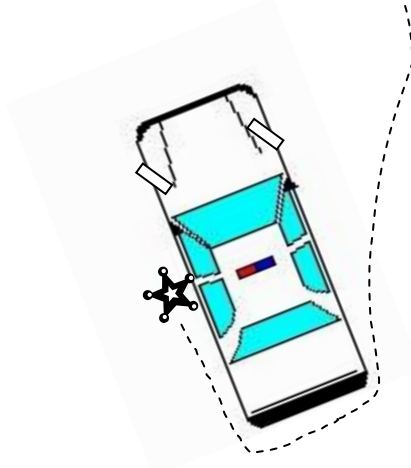
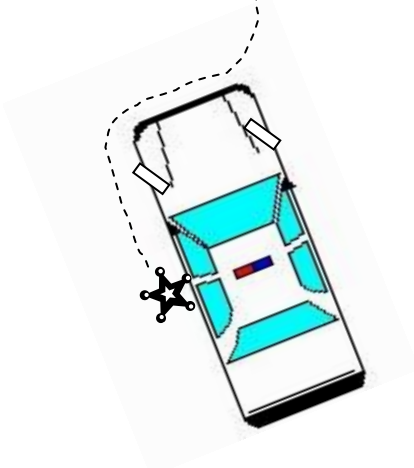
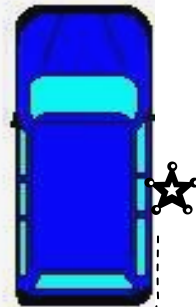
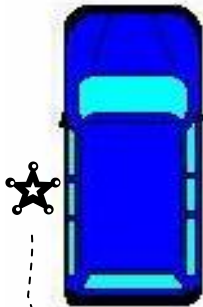
## POSITION 2 – ANGLE

This position allows even greater protection to the officer since a portion of the squad car itself (the left front fender and a portion of the engine block) is placed between the officer and violator. It should be noted that the angle need not be so pronounced that the lighting effects of the squad headlights are greatly reduced during a night-time stop. Be cautious not to blind oncoming traffic with headlights, spotlight and other emergency lighting.



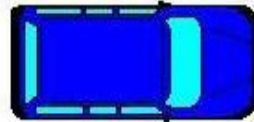
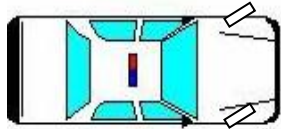
Standard Approach

Crossover Approach



## POSITION 3 – IN-LINE

This position is another option if traffic patterns (flow, intensity, etc.) or roadway design are limited, or other tactical factors have been recognized. The officer must be especially cautious of the proximity of approaching traffic during the entire duration of the vehicle stop.



### Standard Approach



### Crossover Approach

