

Collision Investigation & PTCR

Facilitator Guide

Session Overview

Discussion – Roles at a Collision Scene	10m
Lecture – 13 Steps of Collision Investigation	40m
Break	10m
Lecture – 13 Steps (cont.)	40m
Break	10m
GROUP EXERCISE – PTCR	1hr50m
Wrap-up	10m
End of Session / Break	10m

Total Session Time: 4 hours

Main Topics of Session:

- *PTCR*
- *13 Steps of Collision Investigation*
- *Traffic Control*
- *Three E's of Traffic Enforcement*

Facilitators Needed: 1 (TR)

Location: Classroom

Materials Needed:

- *PowerPoint - Collision Investigation*
- *ASSIGNMENT - Collision Details*
- *HANDOUT - ANSWER KEY - PTCR*
- *PTCR Forms - Parts A, B, & Supplemental*
- *PTCR Overlay*
- *Template*

Students Should Already Have:

- *Pocket Press - Traffic Laws*

[THUMB DRIVE]

- *"Collision Investigation" Study Session in Module 4 Study Guide*
- *HANDOUT - Characteristics of Tire Marks*
- *HANDOUT - DOE Secure Load Brochure*
- *HANDOUT - Example PTCR*
- *HANDOUT - Manual Traffic Control*
- *HANDOUT - Marks on the Roadway*
- *HANDOUT - Measuring at Collisions (basic)*
- *HANDOUT - Traffic Control Graphic Depictions*
- *PTCR Instruction Manual*



Collision Investigation & PTCR

Facilitator Guide



NOTE TO FACILITATOR

Using the provided PowerPoint, explain to the class the 13 steps of a collision investigation.


Slide 1



Slide 2

Your Roles at a Collision

- **Primary:**
 - Safety
 - Investigate/record the event
- **Additional:**
 - Three E's
 - Determine if a violation has occurred




NOTE TO FACILITATOR

Briefly Review the Three E's of Traffic Enforcement. This information was provided in the "Collision Investigation" Study Session in the Module 4 Study Guide.

Slide 3



Collision Investigation & PTCR

Facilitator Guide

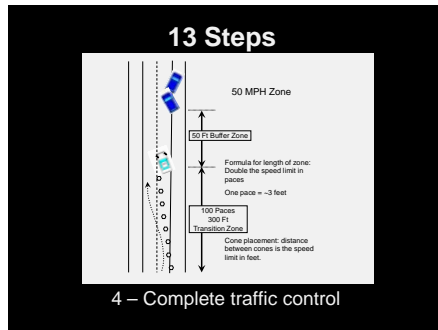
Slide 4



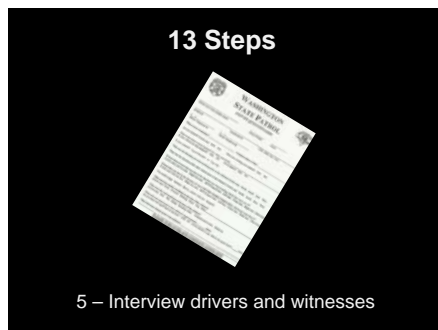
Slide 5



Slide 6



Slide 7



Collision Investigation & PTCR

Facilitator Guide

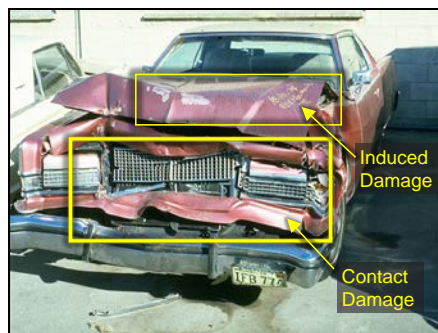
Slide 8



Slide 9



Slide 10



SAY TO CLASS - Two Types of Damage



Contact Damage

- Damage made by direct contact.
- Shown by rub-off of paint, tire rubber, road material, bark, even pedestrian clothing or body tissue.
- Imprints of headlight, wheel rims, bumpers, license plates.
- Mainly indicated by closely compacted, crumpled body parts.

Induced Damage

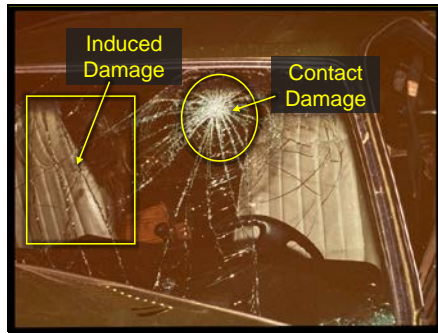
- Damaged caused by the shock of the contact damage.
- Indicated by displacement and by folds, bends, creases, and wrinkles.



Collision Investigation & PTCR

Facilitator Guide

Slide 11



SAY TO CLASS - Laminated Safety Glass

- Holds together so it is easier to tell if contact or induced.
- Induced damage will show as parallel fracture lines.
- Contact damage will produce a spider web. Starting from the point of contact and going out. There may be an actual hole.

Slide 12



SAY TO CLASS

Obscure Imprints

- Easily go unnoticed
- License Plate numbers
- Measure both parts to match them
- Compare distance to the ground

Rub-Off

- Shows surface contact.
- Usually paint, could be rubber from tires, fabric, skin, hair, mud.
- Motion during contact is often indicated



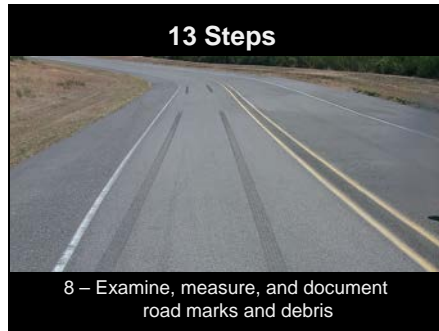
BREAK



Collision Investigation & PTCR

Facilitator Guide

Slide 13



Slide 14



Slide 15



EXACT spot collision took place.

Slide 16



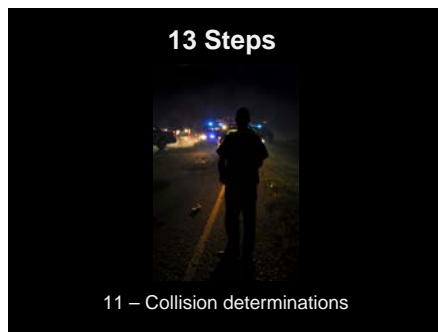
Collision Investigation & PTCR

Facilitator Guide

Slide 17



Slide 18



Slide 19



Slide 20



Collision Investigation & PTCR

Facilitator Guide

Slide 21

REVIEW:13 Steps

1. Get to the scene safely and quickly
2. Set up preliminary traffic control
3. Handle emergencies
4. Complete traffic control
5. Interview drivers and witnesses
6. Photograph
7. Inspect vehicles
8. Examine, measure, and document road marks and debris
9. Clear collision scene
10. Collision follow-up and complete investigation
11. Collision determinations
12. Take enforcement action
13. Finish collision report



STUDY

- STUDY MATERIAL**
- HANDOUT - Manual Traffic Control [THUMB DRIVE]
 - HANDOUT - Marks on the Roadway [THUMB DRIVE]
 - HANDOUT - Measuring at Collisions (basic) [THUMB DRIVE]
 - HANDOUT - Traffic Control Graphic Depictions [THUMB DRIVE]

Instructions: These handouts from your thumb drive in Module 4 /Session 13 contain additional information you will find useful.



RES

- RESOURCE MATERIAL**
- HANDOUT - Characteristics of Tire Marks [THUMB DRIVE]
 - HANDOUT - DOE Secure Load Brochure [THUMB DRIVE]

Instructions: These handouts are on your thumb drive (and in the computer lab).



BREAK



Collision Investigation & PTCR

Facilitator Guide



GROUP EXERCISE - PTCR

Time: 1hr 50m (*1hr 50m work*)

- Materials:
- ASSIGNMENT - Collision Details
 - *PTCR Forms - Parts A, B, & Supplemental*
 - *PTCR Overlay*
 - *PTCR Instruction Manual [THUMB DRIVE]*
 - *HANDOUT - Example PTCR [THUMB DRIVE]*
 - *Pocket Press - Traffic Laws*

Instructions: **Your group has just under 2 hours to complete the following tasks. You will work together as a team to accomplish the goals listed below. However, each member of the group must complete their own set of paperwork for this exercise. You may use any resources available to you, and help each other as much as you'd like, but each recruit must complete their own Police Traffic Collision Report (PTCR) and citation(s) for this exercise.**

1. Complete the collision investigation forms
2. Complete the scene drawing
3. Complete the narrative
4. Determine the appropriate enforcement action and complete the citation(s) if needed

NTF: Check in with the groups regularly to ensure that they are all participating in the project. Encourage them to look up the answers in the PTCR Instruction Manual (as opposed to just giving the answers to them). Once they have completed the exercise, pass out the ANSWER KEY and have them correct each other's in class.



STUDY MATERIAL - HANDOUT - ANSWER KEY - PTCR

Instructions: Here is a completed PTCR for the collision scenario you were just working on.



BREAK/END OF SESSION

