

50 MPH Zone

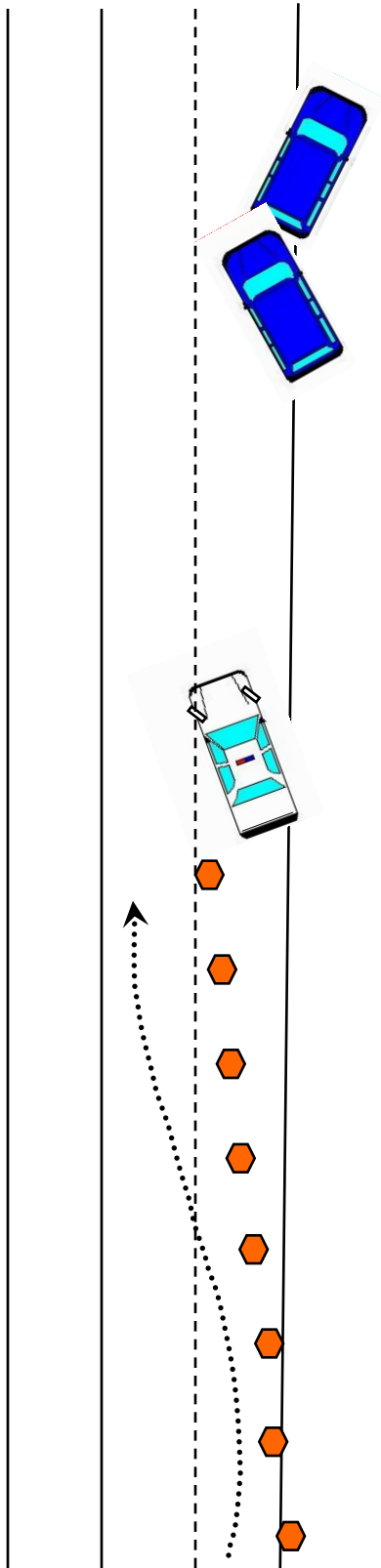
50 Ft Buffer Zone

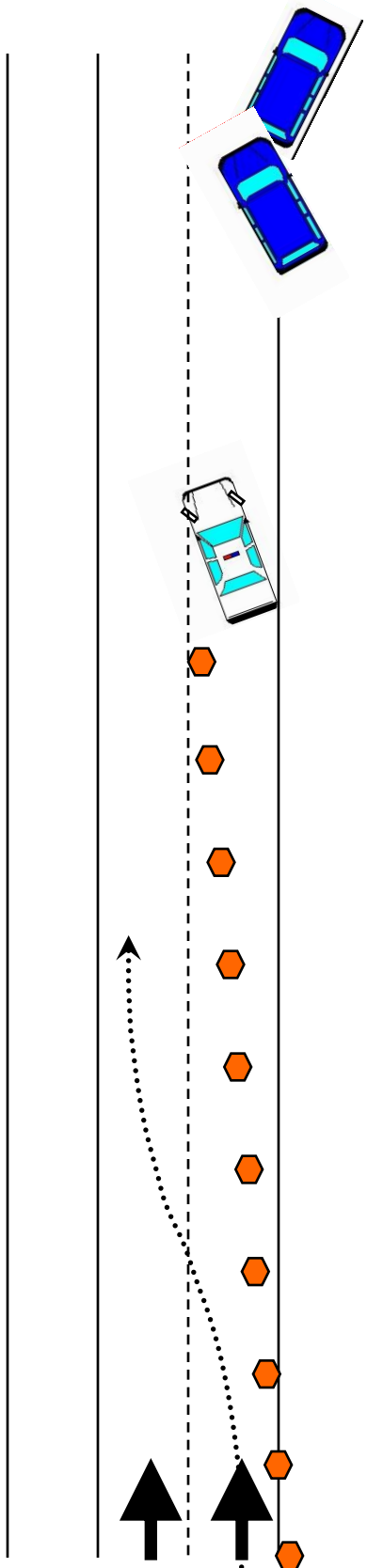
Formula for length of zone:
Double the speed limit in
paces

One pace = ~3 feet

100 Paces
300 Ft
Transition Zone

Cone placement: distance
between cones is the speed
limit in feet.





55 MPH Zone

50 Ft Buffer Zone

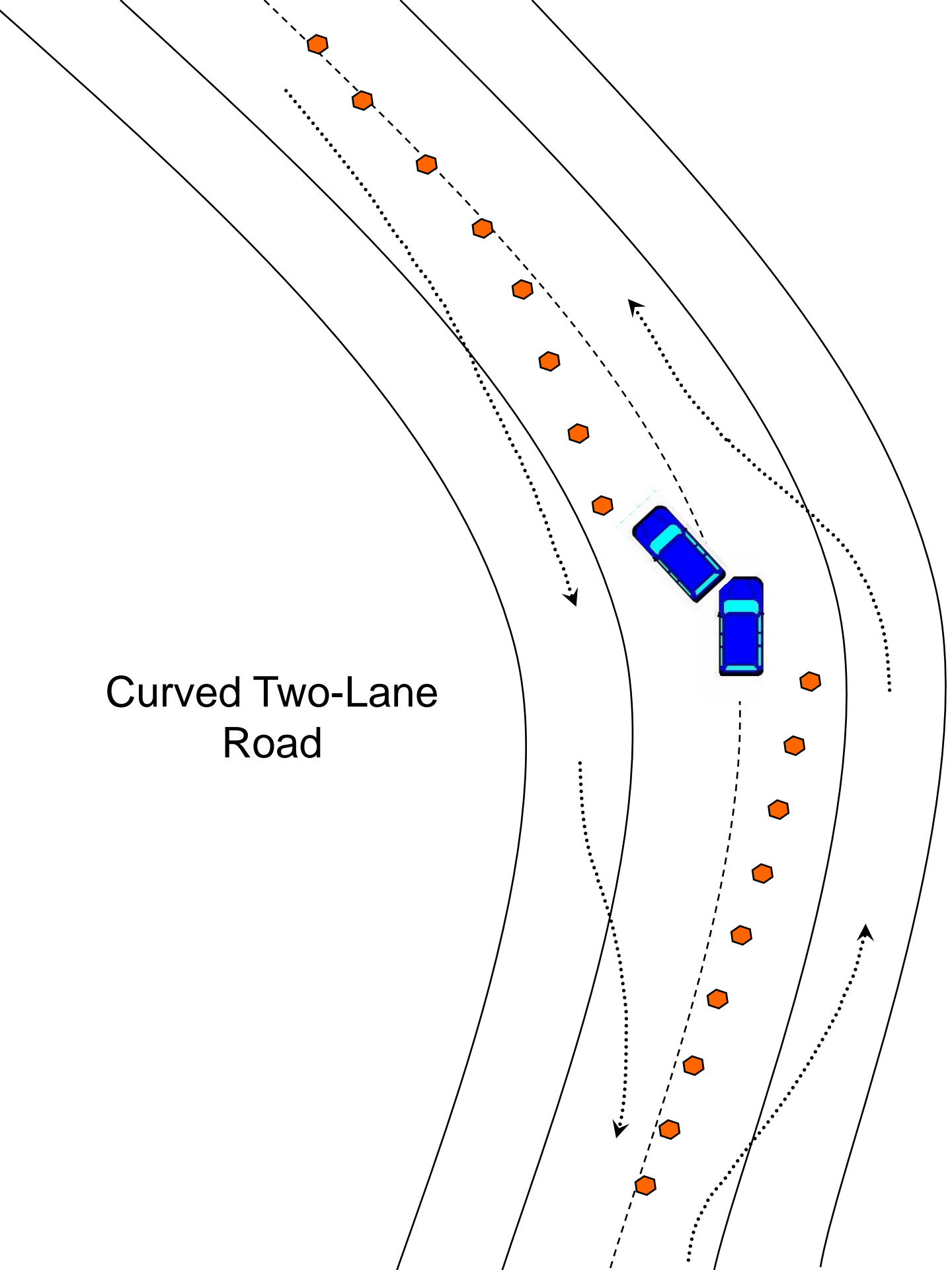
Formula for length of zone:
Double the speed limit in
paces

One pace = ~3 feet

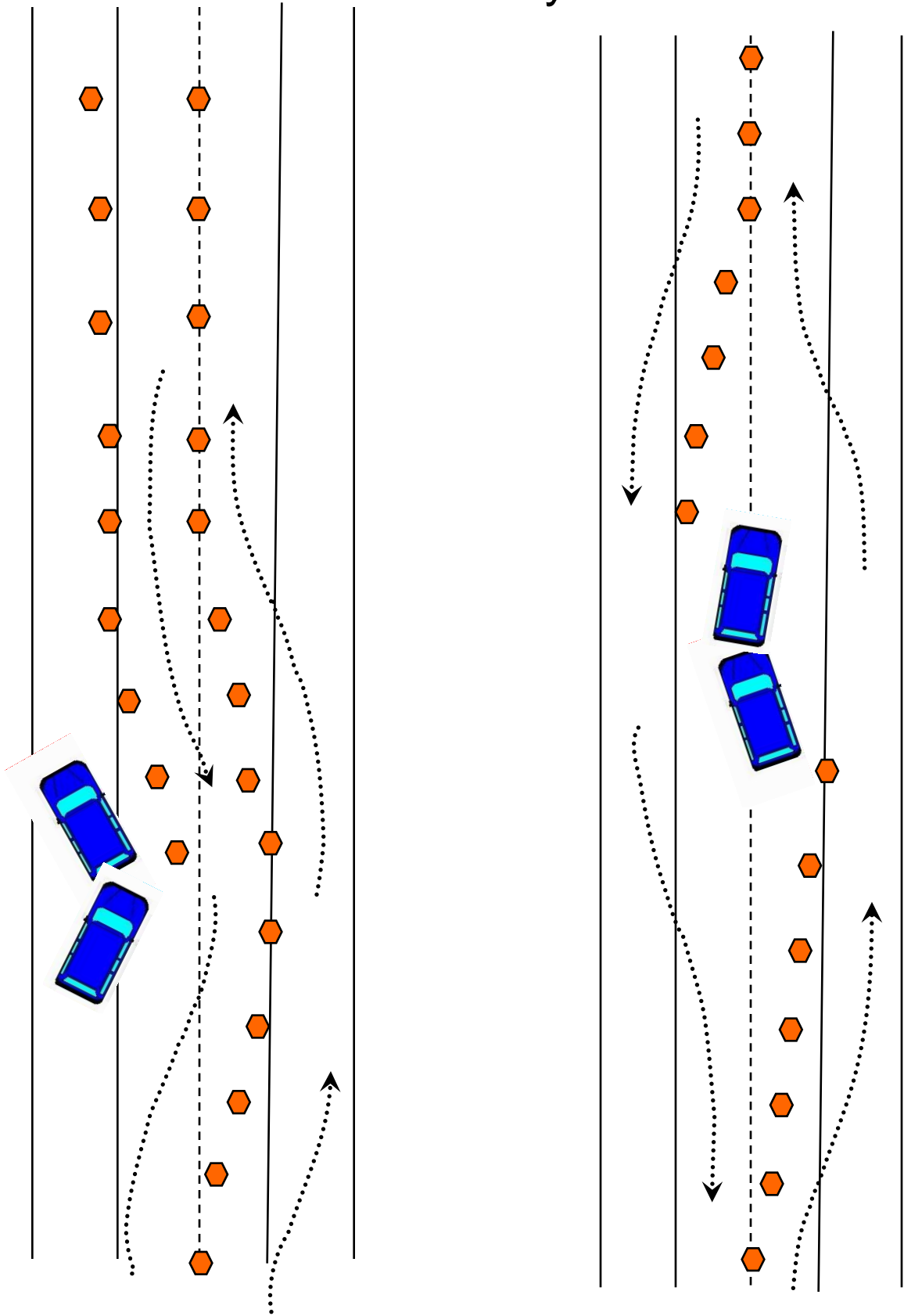
110 Paces
330 Ft
Transition Zone

Cone placement: distance
between cones is the speed
limit in feet.

Curved Two-Lane Road



Two Lane Roadways



Freeways

