

BATON ROUGE *Police*



2005

Hurricane Katrina



CHIEF JEFF LEDUFF

Baton Rouge Police Department



BATON ROUGE *Police*

Baton Rouge Population 33% Increase:

City

Pre-Katrina 226,000

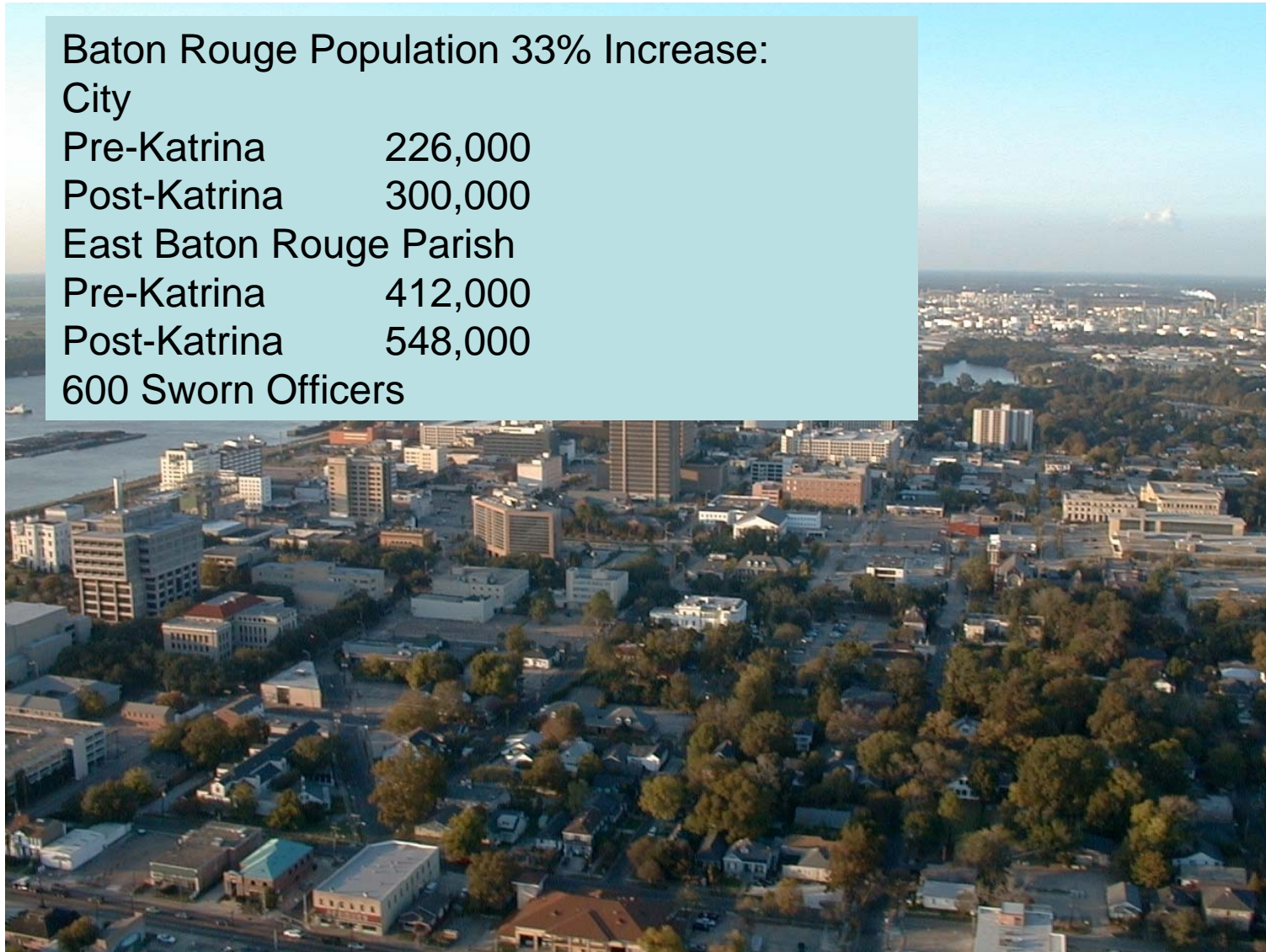
Post-Katrina 300,000

East Baton Rouge Parish

Pre-Katrina 412,000

Post-Katrina 548,000

600 Sworn Officers



TIMELINE

August 10th

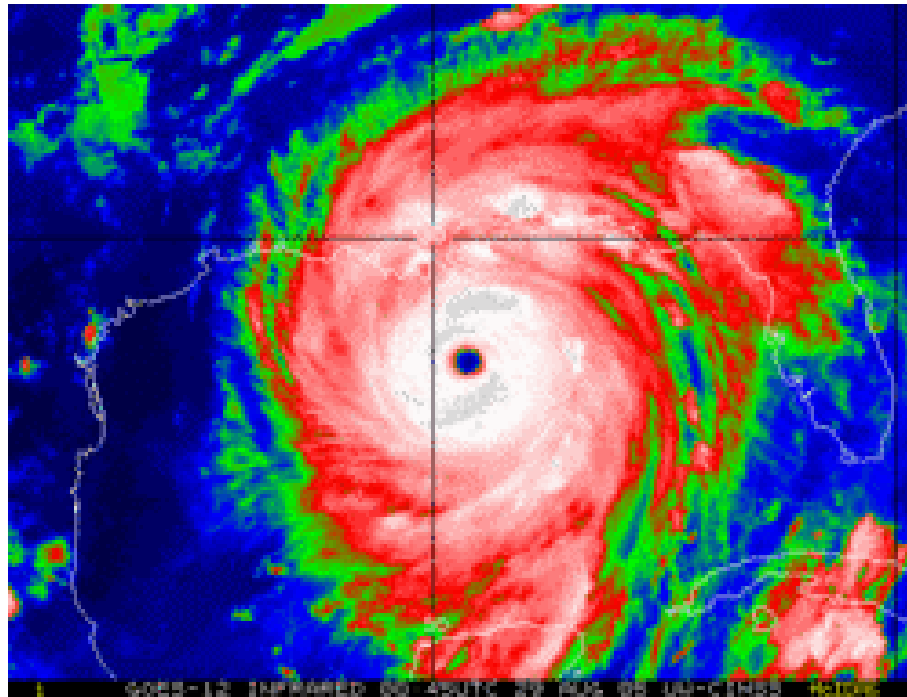
Three Officers Shot, One Killed



TIMELINE

August 26th

Katrina in Gulf of Mexico



TIMELINE

August 27th

*Category 3 – State of Emergency Declared by
President and Governor, EOC Activated*



TIMELINE

August 28th

*Category 4 – Southeast Louisiana Evacuates
To / Through Baton Rouge*



TIMELINE

August 29th

Landfall! Staffing, EOC, Hospitals, Shelters



TIMELINE

August 30th-31st

BR Becomes Ground Zero for national response – the “new” New Orleans



BATON ROUGE *Police*

September 1st

All Hell Breaks Loose

The Invasion – Air, Land and Sea

LINE



SHELTERS AND SECURITY



- The River Center

- 8,500 evacuees / 120 officers/200 National Guard

SHELTERS AND SECURITY



- Southern University

- 1,500 evacuees / 40 officers/40 National Guard

SHELTERS AND SECURITY



- Aid Distribution Centers
 - 20 Officers/20 National Guard

CALLS FOR SERVICE



- Pre-Katrina
 - 500 per day
- Post-Katrina
 - 1,100 per day
- 28 Days
- 12 hour shifts/No day off

RUMOR CONTROL



- Riots, Looting, Rapes, Kidnapping, Murders
- Downtown Closures
- Civilian Gun Sales
- Talk Radio/Internet/Email



RED CROSS

- Know their policies and procedures
- Communicate
- Identification of Shelter Residents Important
- Have Shelter Security Plan



LESSONS LEARNED

- Establish a Joint Information Center
- Law Enforcement Unified Command
- Administration and Elected Officials
- Coordinate with Service Entities and Utilities



LESSONS LEARNED

- Establish a State Mutual Aid Agreement
 - Unaffected Areas Send Help
 - Help Must Be Self Sustained



LESSONS LEARNED

- Communications
 - Have a plan
 - Have a backup plan
 - Identify systems for call-out
 - Exercise the plans in advance

BATON ROUGE

Police

LESSONS LEARNED

- Critical Incident Stress Management
 - Officers' mental state must be cared for



LESSONS LEARNED

- Supplies – must be able to sustain department for seven days
 - MRE's/Water
 - Dorm With Showers and Cots
 - Uniforms
 - Pre Arrange Food Vendors



LESSONS LEARNED

- Volunteers In Police Service (VIPS)
 - Establish and utilize volunteers
 - Retired officers



LESSONS LEARNED

- Public Information Officer (PIO)
 - Coordinate and monitor media
 - If possible, monitor Internet

BATON ROUGE *Police*

Chief Jeff Leduff
225-389-3802
cjleduff@brgov.com

